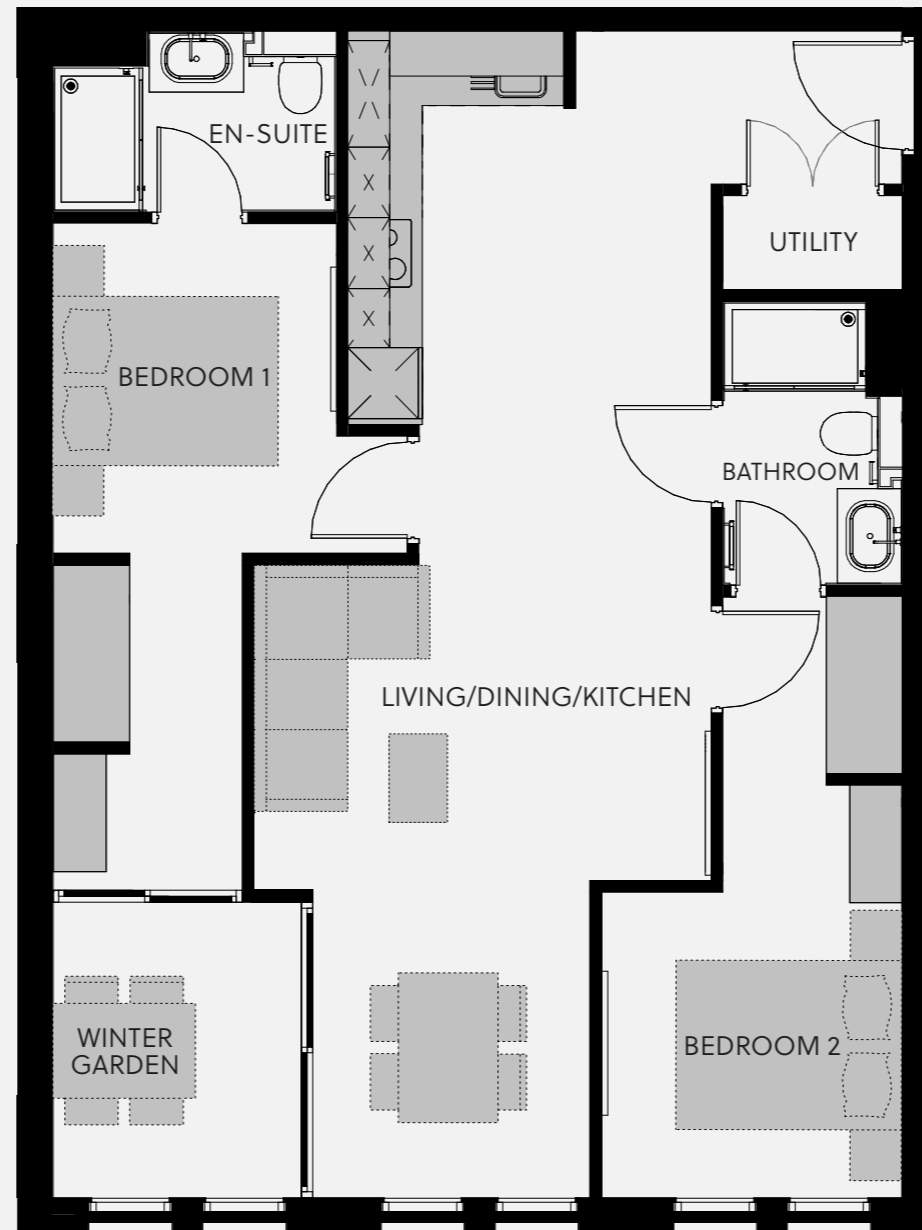


ST GEORGE'S GARDENS - APARTMENT 2A

TYPICAL LAYOUT



With unrivalled views over the Grade II listed church from which its name is derived, this stunning new Castlefield development offers a luxurious approach to city centre living.

Living/Dining/Kitchen - 3.870m x 9.873m
Bedroom 1 - 2.408m x 5.643m
Bedroom 2 - 2.538m x 5.009m
Bathroom - 1.513m x 2.475m
En-Suite - 2.408m x 1.535m
Winter Garden - 2.158m x 2.583m
Utility - 1.513m x 0.745m

All measurements taken from the widest point in a room.

There are some instances where ceiling heights may vary. Please enquire for more information on this.

ST GEORGE'S GARDENS
 PHASE 4

ST GEORGE'S GARDENS - APARTMENT 2A

TYPICAL LAYOUT



Walnut accented wall paneling and classic herringbone flooring, complemented by matt black ironmongery adding a contemporary twist to this unique space.

ST GEORGE'S GARDENS
PHASE 4